

Jordan River Now Developed To Limit

Little Ceremony At First Turning Of Big Generator

Vice-President A. T. Goward, With Officials of B.C. Electric Railway Company and Installation Experts, Witnessed Initial Operation of New Jordan River Equipment

On Monday, November 18, the first turning of the big generator of the B.C. Electric Railway Company at Jordan River was witnessed by a number of officials and experts.

The ceremony was witnessed by A. T. Goward, vice-president of the B.C. Electric Railway Company, and other officials.

The hour of actually starting the new plant, held in the air of excitement, was witnessed by a number of officials and experts.

The new generating plant at Jordan River is a 10,000-horsepower, three-phase, three-wire, 2,300-volt, 60-cycle, synchronous generator.

The plant is a 10,000-horsepower, three-phase, three-wire, 2,300-volt, 60-cycle, synchronous generator.

and about 100,000 gallons of water per hour. The water is pumped from the Jordan River into the reservoir and then into the turbine. The turbine is connected to the generator, which produces electricity.

The design of the generating device is based on the principle of the water wheel. The water flows over the blades of the turbine, causing it to rotate.

As a result of the installation, very few people are able to utilize the Jordan River power. The plant is a 10,000-horsepower, three-phase, three-wire, 2,300-volt, 60-cycle, synchronous generator.

The plant is a 10,000-horsepower, three-phase, three-wire, 2,300-volt, 60-cycle, synchronous generator.

The plant is a 10,000-horsepower, three-phase, three-wire, 2,300-volt, 60-cycle, synchronous generator.

The plant is a 10,000-horsepower, three-phase, three-wire, 2,300-volt, 60-cycle, synchronous generator.

TRIBUTES PAID CONTRACTORS BY A. T. GOWARD

Vice-president of B.C. Electric Co. Praises Workmanship at Jordan River

Local Officials Complemented Upon Efficient Supervision of Installation

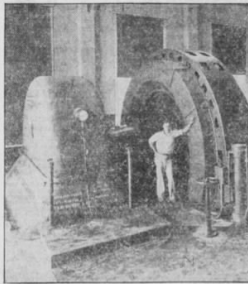
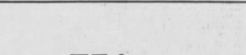
"I cannot say too much in praise of the very able way in which our local engineering staff has handled and supervised this very important development," said A. T. Goward, vice-president of the B.C. Electric Railway Company, yesterday.

James A. L. Newell, vice-president and chief engineer, and E. C. Fawcett, chief electrical engineer, both of Vancouver and the Victoria staff.

"It is very largely due to their efforts that the new plant has been put into operation so early," said Goward.

"A description of the work would be incomplete without a word of tribute to the British Columbia Engineers, who have supervised the installation of the plant."

"The field section of the plant, the generator, the transformer and other main equipment, was installed by the Victoria staff under the supervision of the British Columbia Engineers."



The new 10,000-horsepower generator.

DOUBLE WATER WHEEL SYSTEM DRIVES ROTOR

Jordan River Power Addition Uses 18,000 Horsepower to Operate Generator

The new generating plant at Jordan River is a 10,000-horsepower, three-phase, three-wire, 2,300-volt, 60-cycle, synchronous generator.

British Columbia Cement Co. LIMITED

BELMONT HOUSE, VICTORIA, B.C.

Manufacturers of

PORTLAND CEMENT

Guaranteed to Pass Engineering Specifications

Capacity, 1,500,000 Barrels Annually

Ocean and Railroad Shipments from Our Docks at the Works

Works:

Tod Inlet and Bamberton, Saanich Inlet, Vancouver Island, B.C.

Concrete For Permanence

SUPPORT HOME INDUSTRIES

Hodgson, King & Marble

ENGINEERS AND CONTRACTORS

VANCOUVER, B. C.

Contractors for Installation of Steel Penstock, Concrete Piers and Anchors