

Cross Fault Ore Body El. 5130  
See Maps 9 & 18  
13000E

B Main Stop El. 5300  
See Maps 6, 7

B-Sill Pillar El. 5130  
See Maps 9, 10, 14

Lower B Ore Body Elev. 5000  
See Maps 9-12 inc. & 16

A Ore Body El. 5130  
See Maps 7, 8, 9 & 18

Lower C El. 5130  
See Maps 7-10 & 13

C Ore Body - Maps 2 to 7 & 15-16  
El. 5670

B-Service Pillar El. 5405 - See Maps 5-8 inc. & 17  
B-South El. 5405 - See Maps 5-7 inc. & 17  
B-South-South Part El. 5405 - See Maps 5, 6 & 18

New Zone Elev. 5130  
See Map # 19, 20

Centre Zone Elev. 5300  
See Map # 19, 20

Centre Adit  
Elev. 5607

Cove Zone El. 5668  
See Map # 19, 20

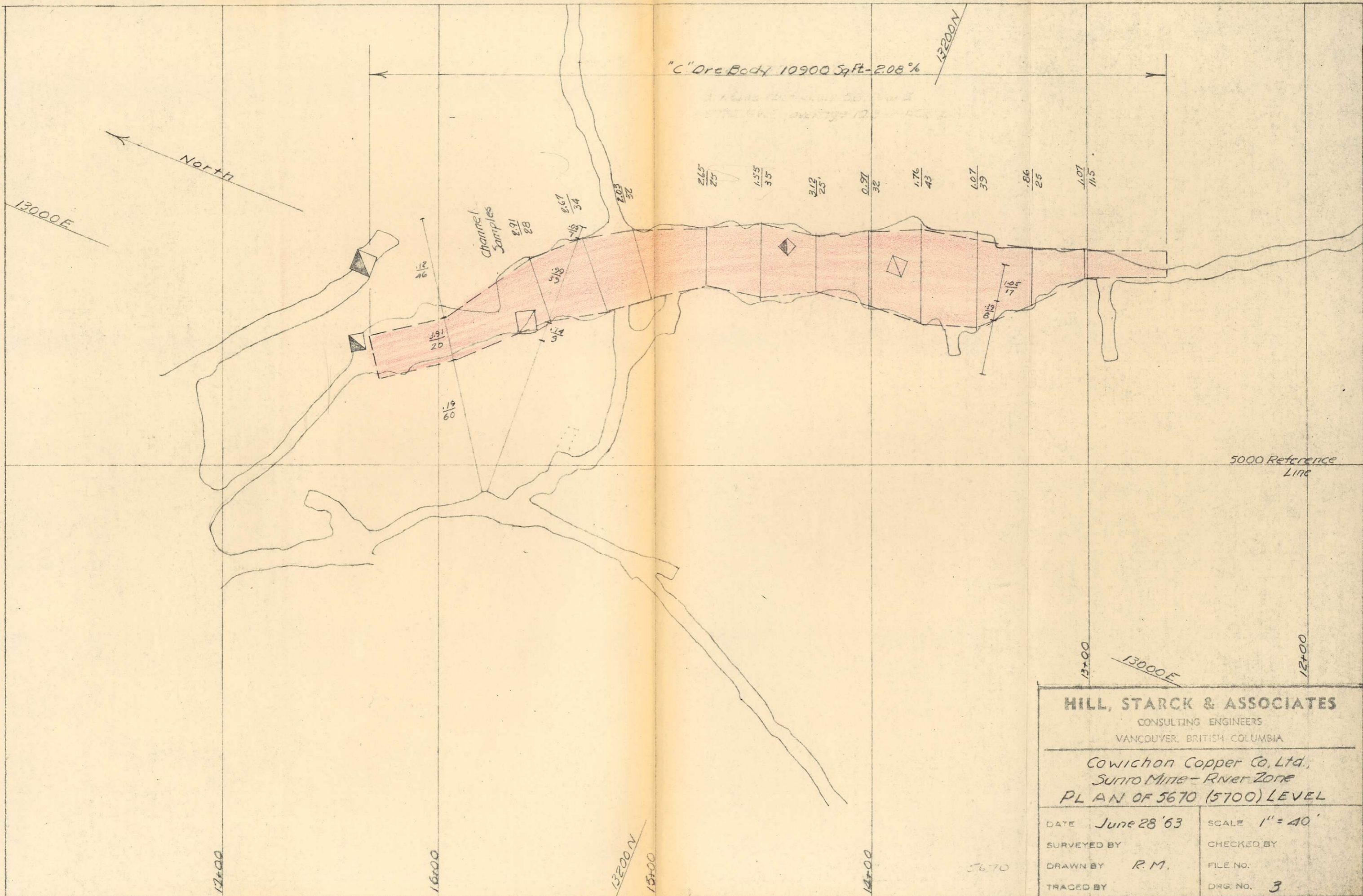
Cave Adit  
Elev. 5666

**LEGEND**

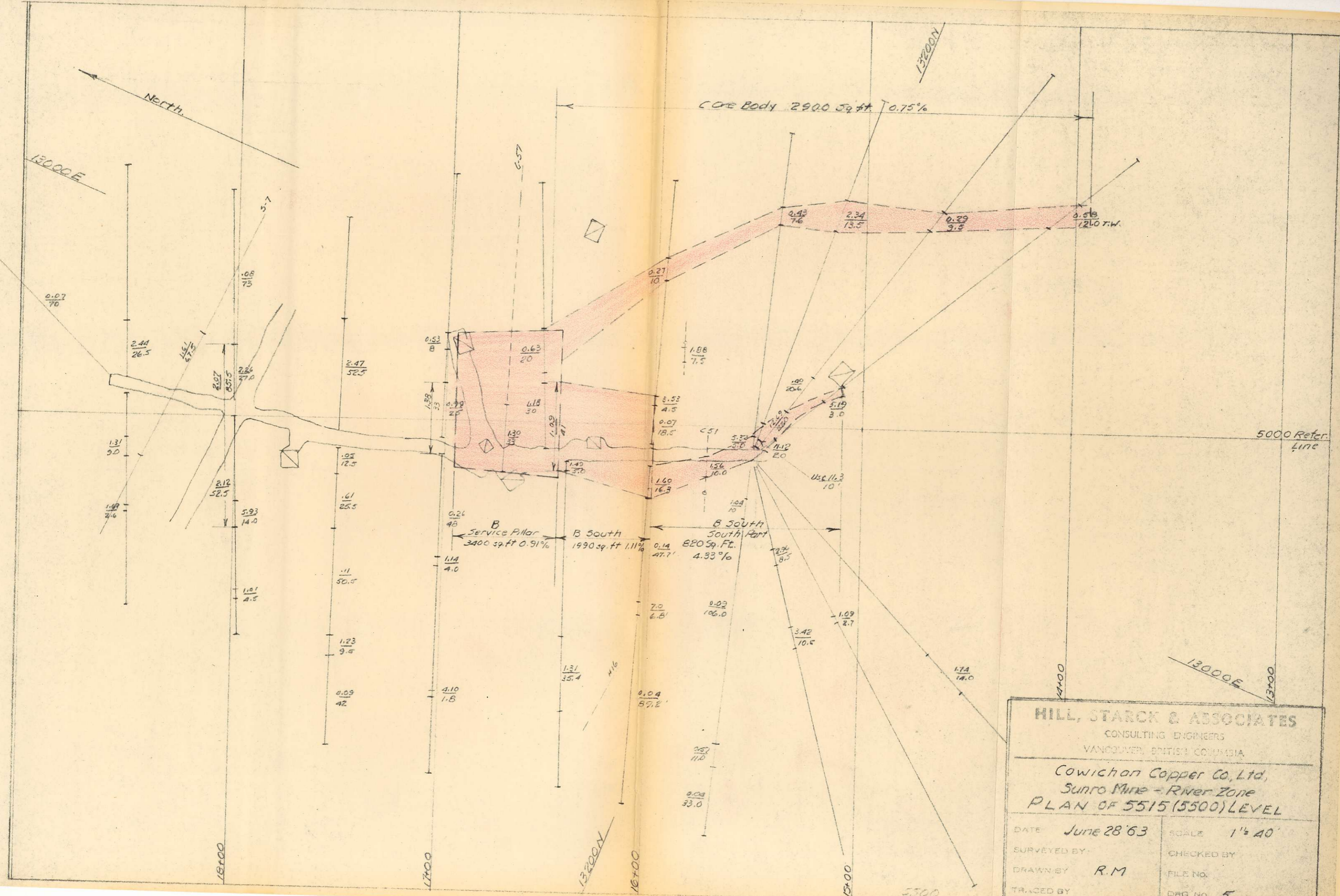
- Sooke Gabbro
- Metchosin Volcanics (Hornblendized Basalt)
- Ore Body
- Fault
- Geology at elev. 5100

<b>HILL, STARCK &amp; ASSOCIATES</b>	
CONSULTING ENGINEERS VANCOUVER, BRITISH COLUMBIA	
Cowichan Copper Co., Ltd. Sunro Mine - Composite Plan Showing Ore Bodies and Geology at Elev. 5100	
DATE: June 25 '63	SCALE: 1" = 100'
SURVEYED BY:	CHECKED BY:
DRAWN BY: R.M.	FILE NO.:
TRACED BY:	DRG. NO. 1









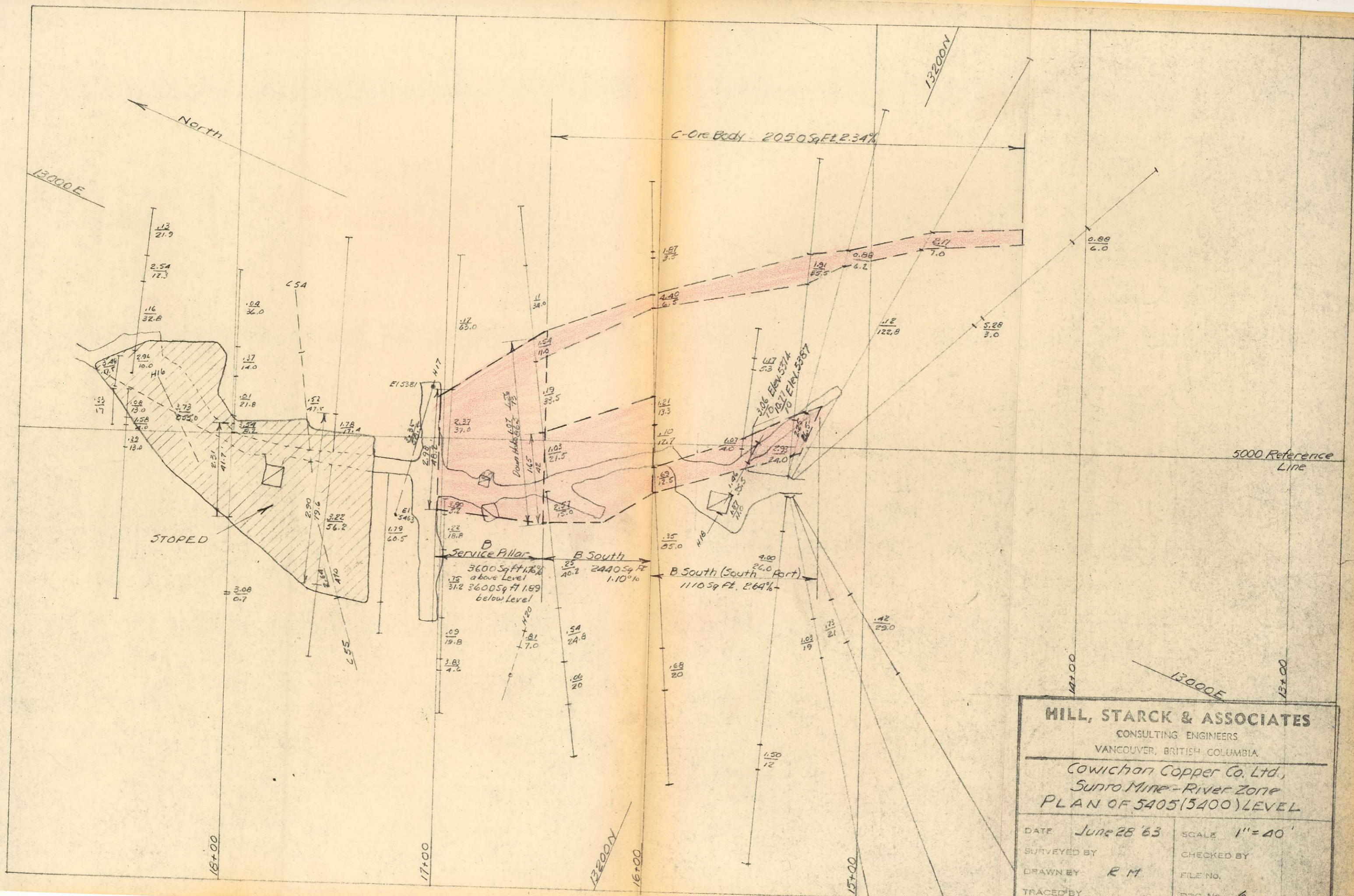
**HILL, STARCK & ASSOCIATES**  
 CONSULTING ENGINEERS  
 VANCOUVER, BRITISH COLUMBIA

---

Cowichan Copper Co., Ltd.  
 Sunro Mine - River Zone  
 PLAN OF 5515 (5500) LEVEL

---

DATE	June 28 '63	SCALE	1" = 40'
SURVEYED BY		CHECKED BY	
DRAWN BY	R.M.	FILE NO.	
TRACED BY		DRG. NO.	5

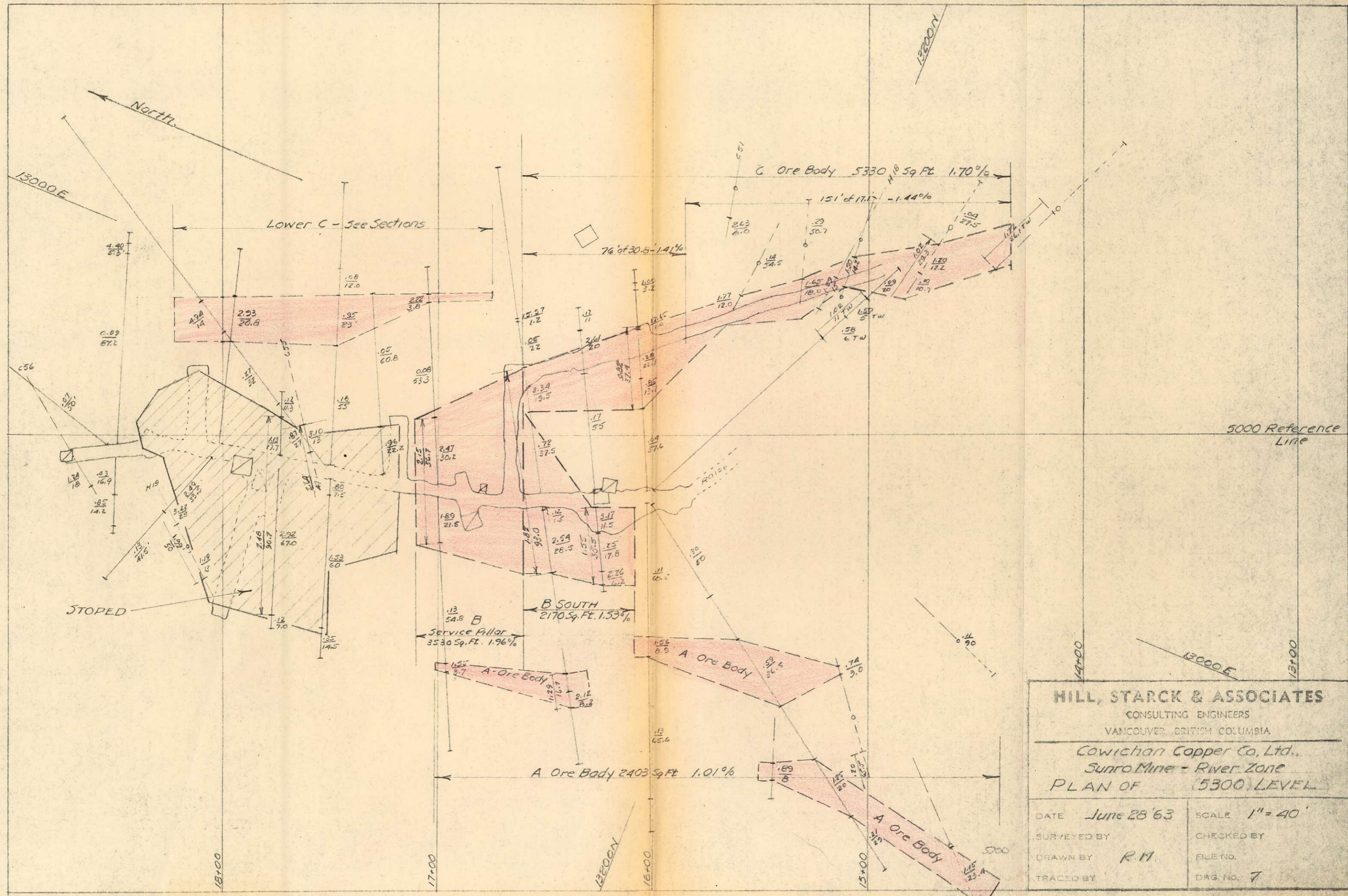


**HILL, STARCK & ASSOCIATES**  
CONSULTING ENGINEERS  
VANCOUVER, BRITISH COLUMBIA

---

*Cowichan Copper Co. Ltd.,  
Sunro Mine - River Zone*  
**PLAN OF 5405 (5400) LEVEL**

DATE	June 28 '63	SCALE	1" = 40'
SURVEYED BY		CHECKED BY	
DRAWN BY	R M	FILE NO.	
TRACED BY		DRG. No.	6

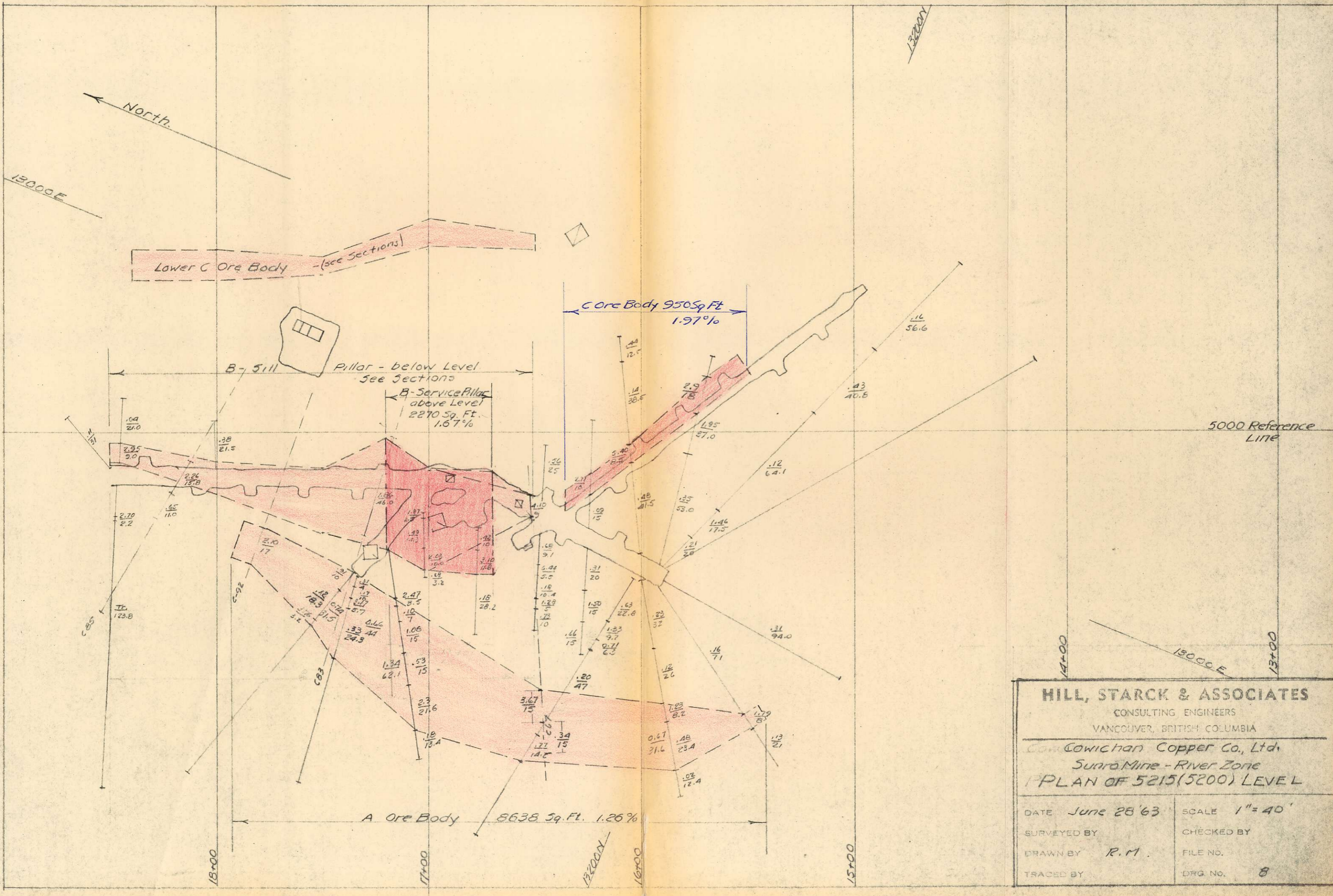


**HILL, STARCK & ASSOCIATES**  
 CONSULTING ENGINEERS  
 VANCOUVER, BRITISH COLUMBIA

---

Cowichan Copper Co., Ltd.,  
 Sunro Mine - River Zone  
**PLAN OF 5300 LEVEL**

DATE <i>June 28 '63</i>	SCALE <i>1" = 40'</i>
SURVEYED BY	CHECKED BY
DRAWN BY <i>R.M.</i>	FILE NO.
TRACED BY	DRG. NO. <i>7</i>



**HILL, STARCK & ASSOCIATES**  
 CONSULTING ENGINEERS  
 VANCOUVER, BRITISH COLUMBIA

---

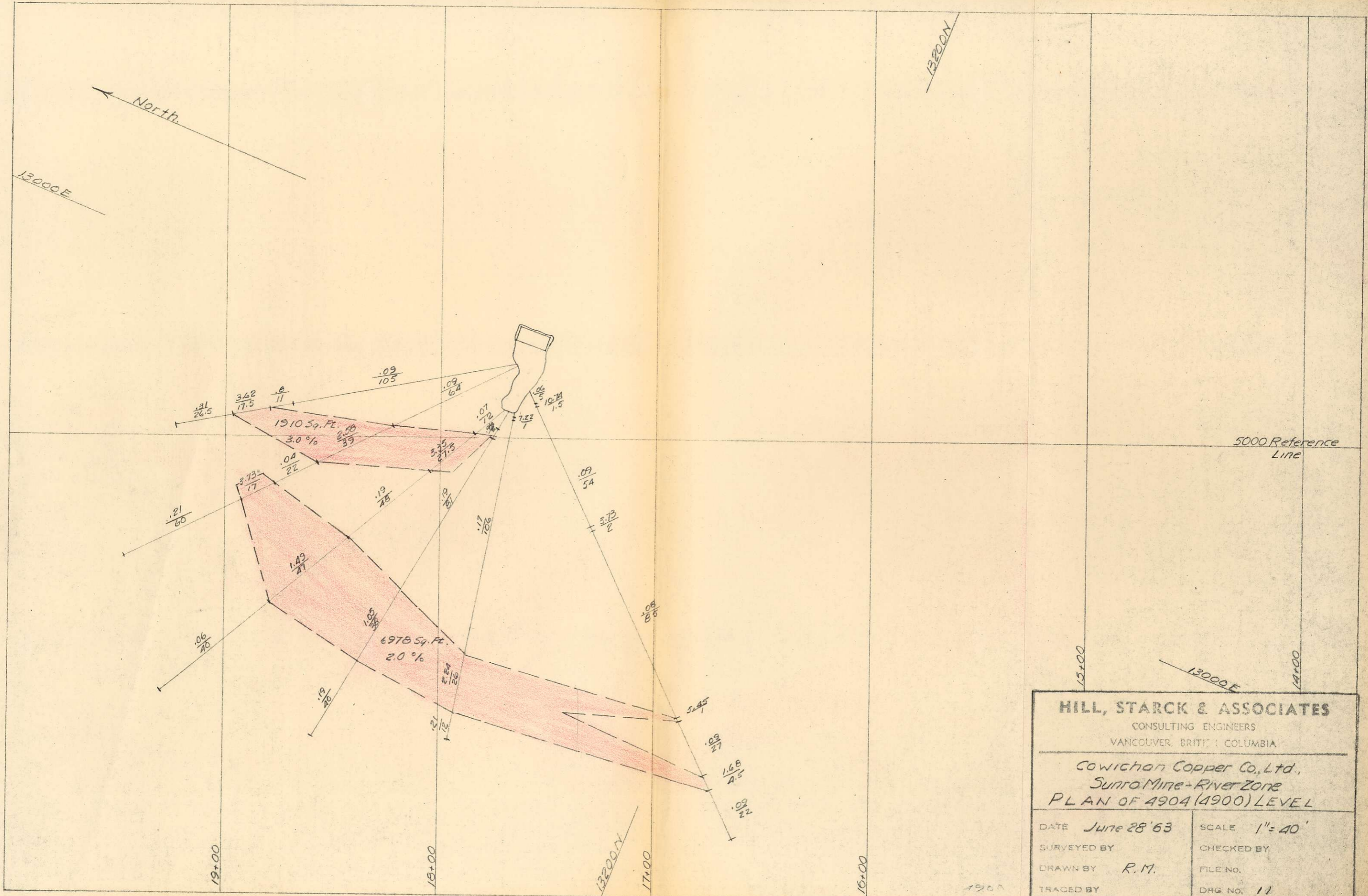
COWICHAN COPPER CO., LTD.  
 SUNNYSIDE MINE - RIVER ZONE  
**PLAN OF 5215(5200) LEVEL**

---

DATE <i>June 28 '63</i>	SCALE <i>1" = 40'</i>
SURVEYED BY	CHECKED BY
DRAWN BY <i>R.M.</i>	FILE NO.
TRACED BY	DRG. NO. <i>8</i>

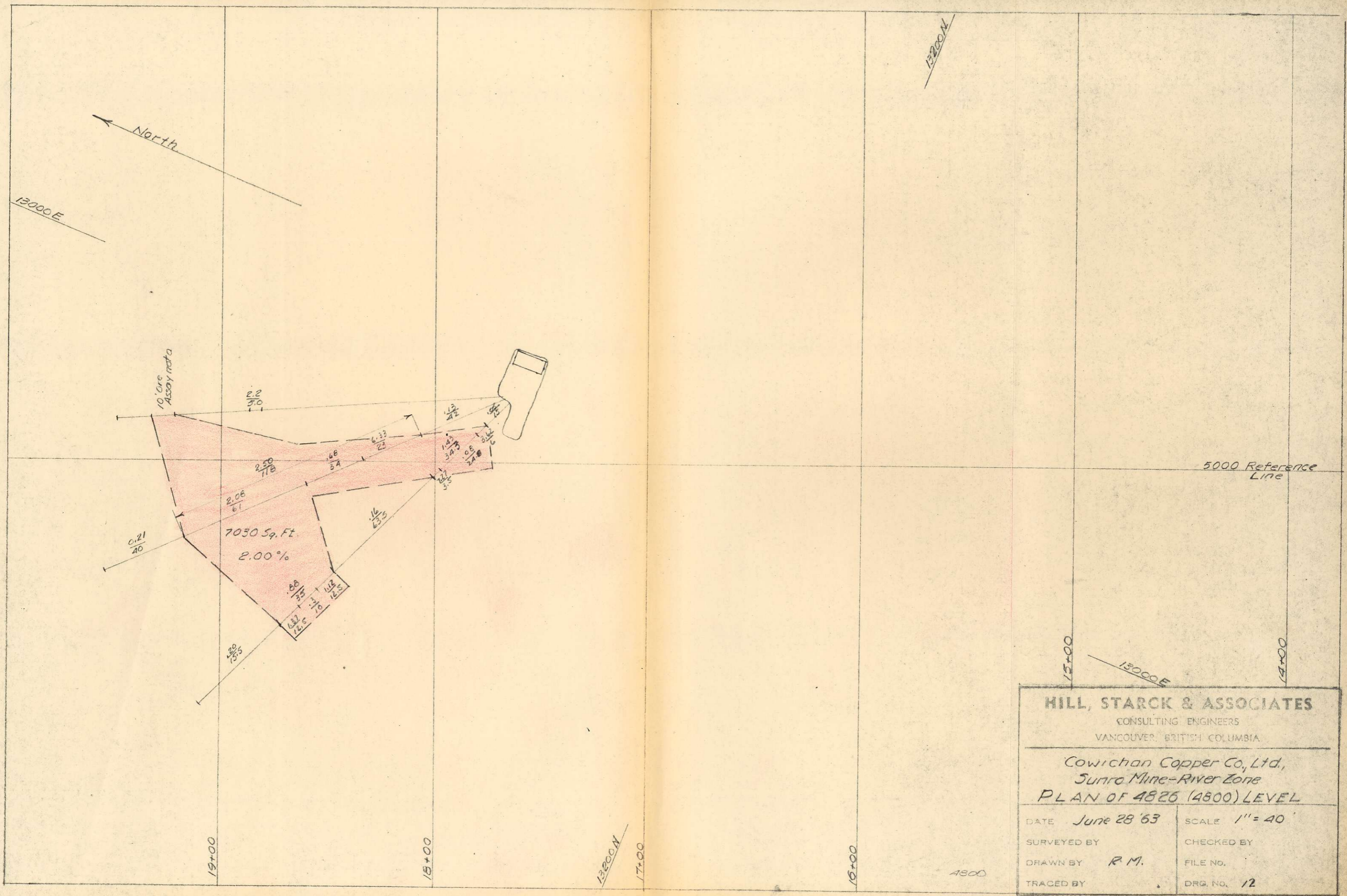






<b>HILL, STARCK &amp; ASSOCIATES</b>	
CONSULTING ENGINEERS VANCOUVER, BRITISH COLUMBIA	
<i>Cowichan Copper Co., Ltd.</i> <i>Sunro Mine - River Zone</i> <b>PLAN OF 4904 (4900) LEVEL</b>	
DATE <i>June 28 '63</i>	SCALE 1" = 40'
SURVEYED BY	CHECKED BY
DRAWN BY <i>R.M.</i>	FILE NO.
TRACED BY	DRG. NO. <i>11</i>

4900



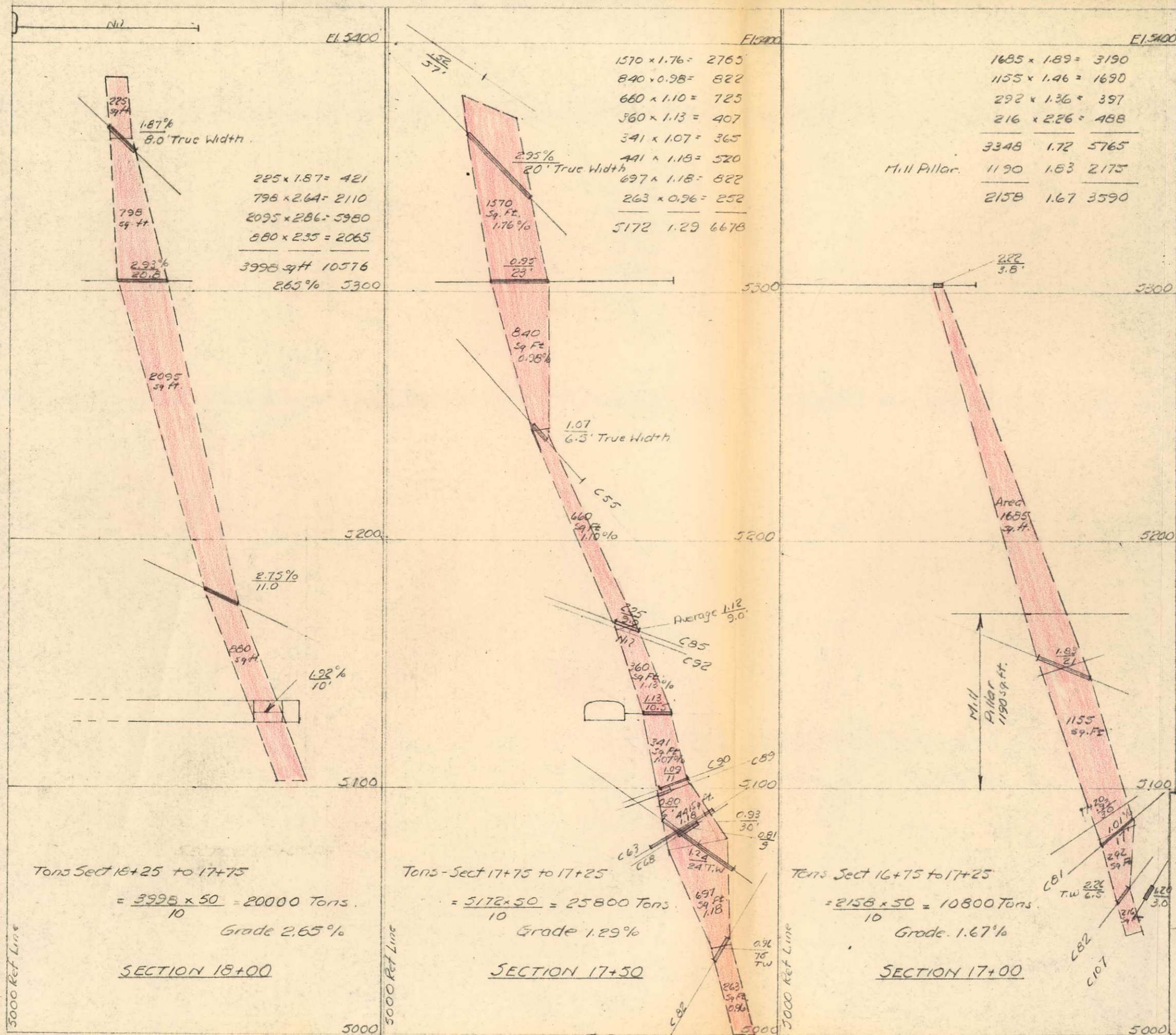
**HILL, STARCK & ASSOCIATES**  
 CONSULTING ENGINEERS  
 VANCOUVER, BRITISH COLUMBIA

---

*Cowichan Copper Co., Ltd.,  
 Sunro Mine-River Zone*

**PLAN OF 4826 (4800) LEVEL**

DATE <i>June 28 '63</i>	SCALE 1" = 40'
SURVEYED BY	CHECKED BY
DRAWN BY <i>R.M.</i>	FILE NO.
TRACED BY	DRG. NO. <i>12</i>



$1570 \times 1.76 = 2765$   
 $840 \times 0.98 = 822$   
 $660 \times 1.10 = 725$   
 $360 \times 1.13 = 407$   
 $341 \times 1.07 = 365$   
 $441 \times 1.18 = 520$   
 $697 \times 1.18 = 822$   
 $263 \times 0.96 = 252$   


---

 $5172 \quad 1.29 \quad 6678$

$1685 \times 1.89 = 3190$   
 $1155 \times 1.46 = 1690$   
 $292 \times 1.36 = 397$   
 $216 \times 2.26 = 488$   


---

 $3348 \quad 1.72 \quad 5765$   
 Mill Pillar:  $1190 \quad 1.83 \quad 2175$   


---

 $2158 \quad 1.67 \quad 3590$

SUMMARY - Lower C.

Sect 17+00	10800 Tons @ 1.67%	18040
17+50	25800 Tons @ 1.29%	33300
18+00	20000 Tons @ 2.65%	53000
<b>Total</b>		<b>56600 Tons @ 1.85% 104340</b>

Tons Sect 16+25 to 17+75  
 $= \frac{3998 \times 50}{10} = 20000 \text{ Tons.}$   
 Grade 2.65%  
SECTION 18+00

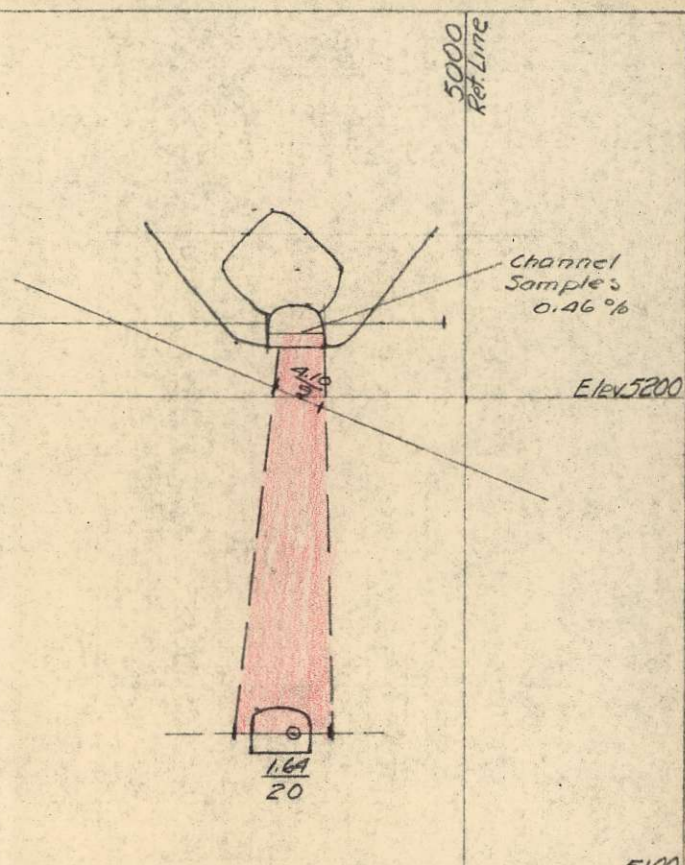
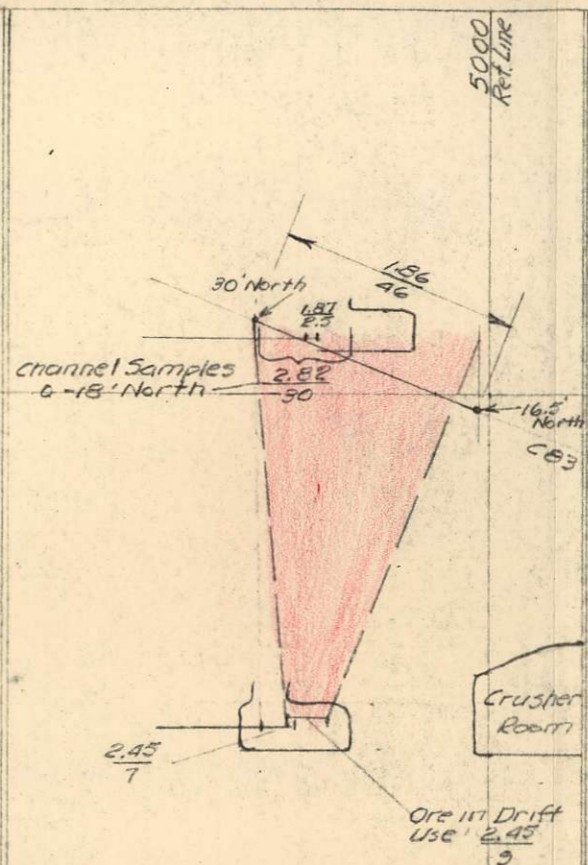
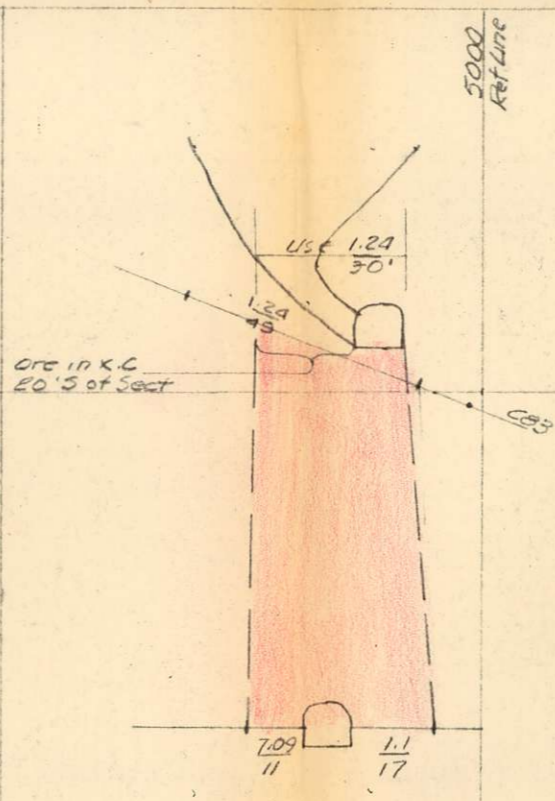
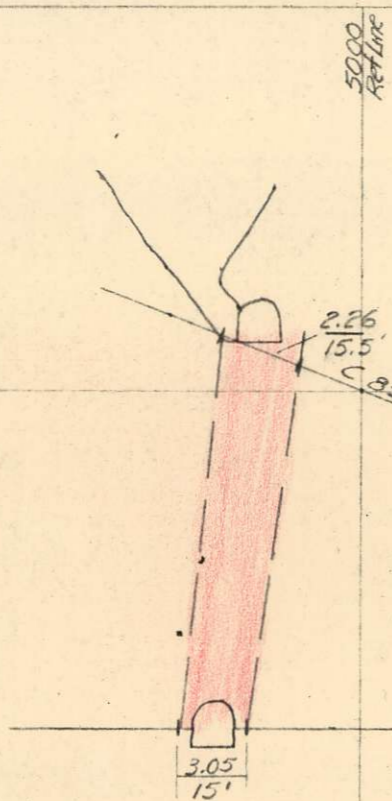
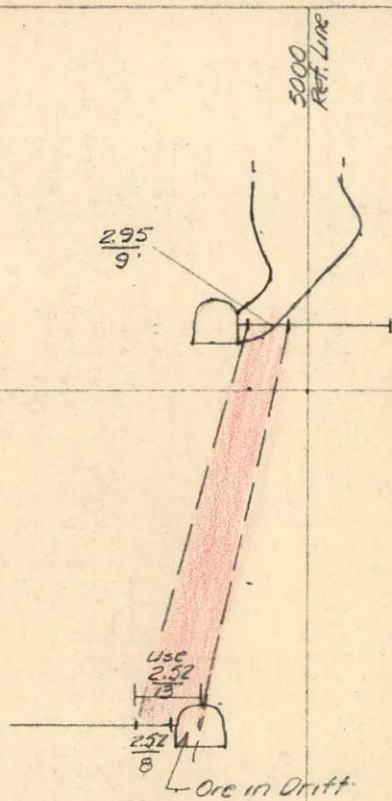
Tons - Sect 17+75 to 17+25  
 $= \frac{5172 \times 50}{10} = 25800 \text{ Tons.}$   
 Grade 1.29%  
SECTION 17+50

Tons Sect 16+75 to 17+25  
 $= \frac{2158 \times 50}{10} = 10800 \text{ Tons.}$   
 Grade 1.67%  
SECTION 17+00

**HILL, STARCK & ASSOCIATES**  
 CONSULTING ENGINEERS  
 VANCOUVER, BRITISH COLUMBIA

Cowichan Copper Co., Ltd.  
 Sunro Mine - River Zone  
 CROSS SECTIONS - LOWER "C" ORE BODY

DATE	June 28 '63	SCALE	1" = 40'
SURVEYED BY		CHECKED BY	
DRAWN BY	RM	FILE NO.	
TRACED BY		DRG. NO.	13.



$9 \times 2.95 = 26.55$   
 $8 \times 2.52 = 20.16$   
 $17 \quad 2.75 \quad 46.71$   
 Area  $\frac{17}{2} \times 8.4 = 710 \text{ Sq. Ft.}$   
 Grade 2.75%

SECTION 18+50

$15.5 \times 2.26 = 35.10$   
 $15 \times 3.05 = 45.8$   
 $30.5 \quad 2.66 \quad 80.90$   
 Area  $\frac{30.5}{2} \times 8.4 = 1280 \text{ Sq. Ft.}$   
 Grade 2.66%

SECTION 18+00

$11 \times 7.09 = 77.99$   
 $17 \times 1.1 = 18.70$   
 $28 \quad 3.45 \quad 96.69$   
 $30 \quad 1.24 \quad 37.20$   
 $58 \quad 2.30 \quad 133.89$   
 Area  $\frac{30+58}{2} \times 8.4 = 2900 \text{ Sq. Ft.}$   
 Grade 2.30%

SECTION 17+50

$46 \times 1.86 = 85.60$   
 $9 \times 2.45 = 22.05$   
 $55 \quad 1.96 \quad 107.65$   
 Area  $\frac{55}{2} \times 8.4 = 2310 \text{ Sq. Ft.}$   
 Grade 1.96%

SECTION 17+00

$20 \times 1.64 = 32.80$   
 $9 \times 2.28 = 20.52$   
 $29 \quad 1.84 \quad 53.32$   
 Area  $\frac{29}{2} \times 8.4 = 1220 \text{ Sq. Ft.}$   
 Grade 1.84%

SECTION 16+50

Sect 16+50  $1220(1.84) = 2245$   
 Sect 17+00  $2310(1.96) = 4530$   
 Sect 17+50  $2900(2.30) = 6670$   
 Sect 18+00  $1280(2.66) = 3400$   
 Sect 18+50  $710(2.75) = 1950$

$\frac{5775}{3530} = 1.92\%$   
 $\frac{11200}{5210} = 2.15\%$   
 $\frac{10070}{4180} = 2.41\%$   
 $\frac{5350}{1990} = 2.69\%$

$\frac{3530 \times 50}{2} = 8800 \text{ Tons. at } 1.92\% \quad 16,900$   
 $\frac{5210 \times 50}{2} = 13000 \text{ " at } 2.15\% \quad 28000$   
 $\frac{4180 \times 50}{2} = 10500 \text{ " at } 2.41\% \quad 25300$   
 $\frac{1990 \times 50}{2} = 5000 \text{ " at } 2.69\% \quad 13400$

TOTAL 37300 Tons. at 2.24% 83600

**HILL, STARCK & ASSOCIATES**  
 CONSULTING ENGINEERS  
 VANCOUVER, BRITISH COLUMBIA  
 Cowichan Copper Co., Ltd.  
 Sunro Mine - River Zone  
 CROSS SECTIONS - SILL PILLAR - BORE BODY  
 DATE June 28 '63 SCALE 1" = 40'  
 SURVEYED BY CHECKED BY  
 DRAWN BY R.M. FILE NO.  
 TRACED BY DRG NO. 14

